

WEEKEND HOUSE

Produced by Ron Herman California



TIERRA Co.,Ltd.

東京都知事(1)第97903号

Akasakanabankan 510, 7-6-41 Akasaka,
Minato-ku Tokyo 107-0052 Japan

TEL: 03-5544-8334 FAX: 03-5544-8318

Concept

“Welcome home”

A cozy home surrounded by stretches of beautiful nature.
You will feel relaxed and comfortable in a space not unlike your friend from California's home.

Here, the ocean breeze will kiss you gently.
Along with the glitter of the water,
you can hear the sound of the waves and you can gaze at the fiery sunset,
at the twinkling of the stars in the sky,
and then you can feel the refreshing fragrance of a new morning.

Here, wondrous relaxing moments pass slowly,
keeping you away from the hustle and bustle of a large city.

The house, RHC HOUSE, was named after [Ron Herman California\(*1\)](#).
This special guest house is located above the [RHC Ron Herman Shichirigahama-store\(*2\)](#),
it embodies the word of Ron Herman and it is one of a kind.

(*1)Ron Herman:

In 1976, Mr. Bayer Ron Herman of FRED SEGAL established a select shop Ron Herman on Melrose Avenue in Los Angeles. Since its inception, he continues to propose the "Californian Style of Life". Its highly sensitive selection attracts well known celebrities and fashion industry people, gaining tremendous support and trust from male and female clients. Being a buyer and a vintage collector himself, he pours his love and passion for fashion into his brand.

(*2)Ron Herman's concept store RHC RON HERMAN opened in Kamakura and Shichirigahama. Within the mini mall, one can visit "Bill's" aka "the best breakfast in the world" where pancakes and other popular dishes are served. Among other shops, there's also a renowned hair salon as well as a surf shop.

Located on Route 134, near the Shonan beachfront, it is said to be a perfect location for Ron Herman, which proposes a lifestyle akin to the West Californian Style. It is only 2 minutes on foot to the nearest station, Shichirigahama sta. on Enoshima Line.

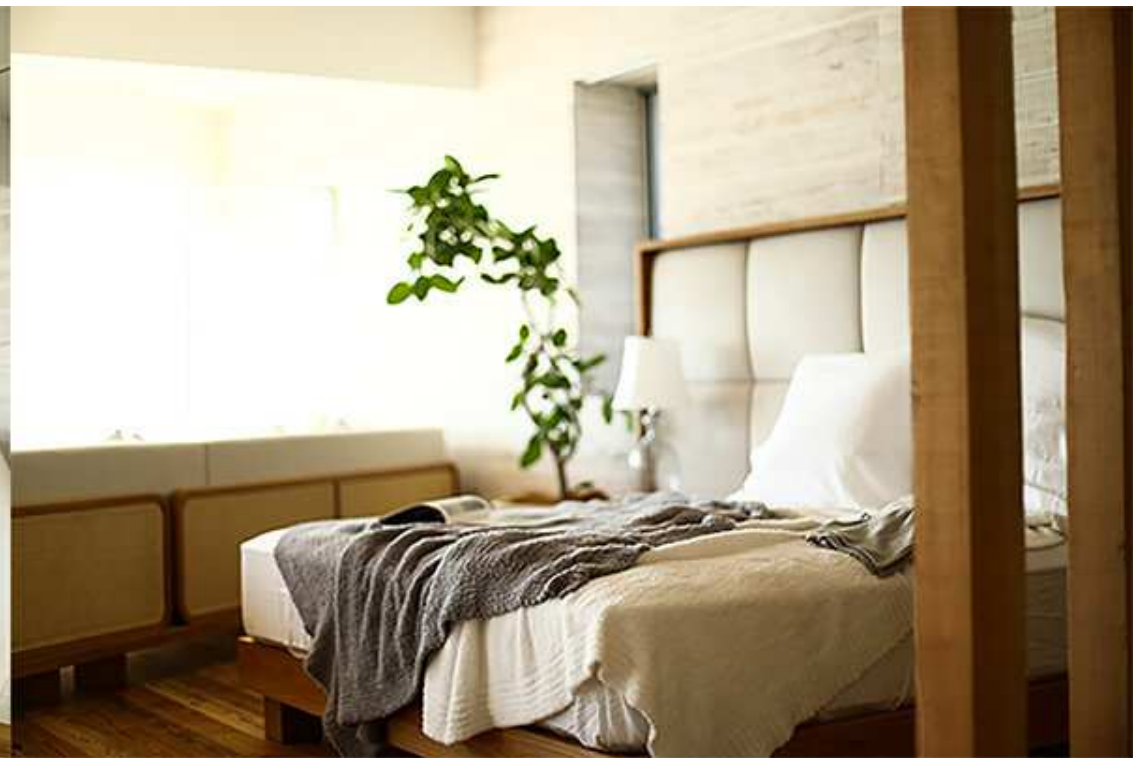
view



A look at the superb view

The unique location and panorama let you enjoy the Shonan coastal culture to your heart's content. Because of Ron Herman's view of the world, you can experience the "California Lifestyle".

bed rooms



A pleasant slumber

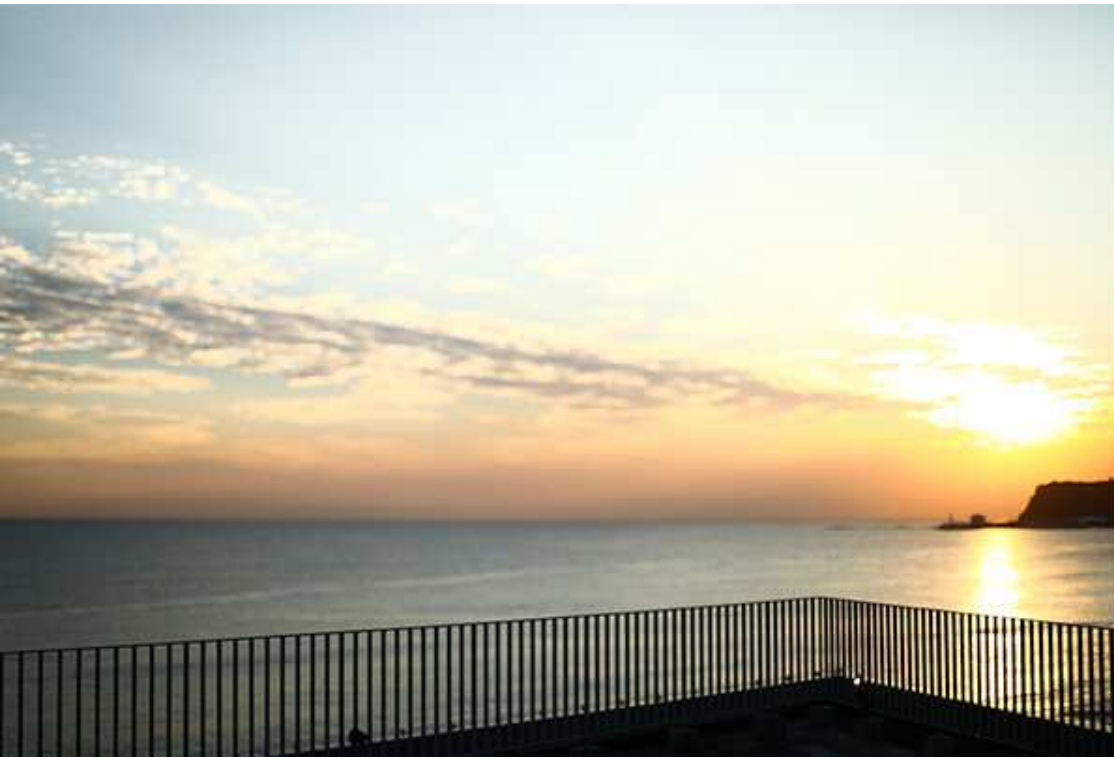
Both bedrooms are furnished with [Simmons\(*3\)](#) King Size beds. The gentle sound of the waves will invite you to a soothing night of sleep..

(*3)SIMMONS CO.,LTD.:

Simmons beds and mattresses are used in luxury hotels such as the Imperial Hotel and The Peninsula Tokyo.

Due to the wonderful sleeping experiences of the guests, many of them are now seriously considering buying Simmons' products for their own home comfort.

rooftop



entrance



Private roof

Here, you can get a magnificent view and a beautiful sunset all to yourself, to the east Hayama, Zushi and Kamakura can be seen and to the west Enoshima and Mt. Fuji.

Roomy entrance

After enjoying surfing at the beach just in front of your place, you can go home and put your board on the surfboard rack, then you can remove your wetsuit in total comfort thanks to the roomy entrance.

dining



Homey dining room

Here, you can eat at a high quality wooden dining table, just like you would find it at your friend's beachfront house in California. You'll feel right at home with this table made of the best materials.

kitchen



Naturally-lit kitchen

In the wide-open kitchen the brilliant sunlight is coming through the courtyard.

You look up casually and you see the vast and distant horizon.
You can forget the dreary routine of daily life as if you were on a calm sea yet right at home.

bath room



Bathroom with a flood of light

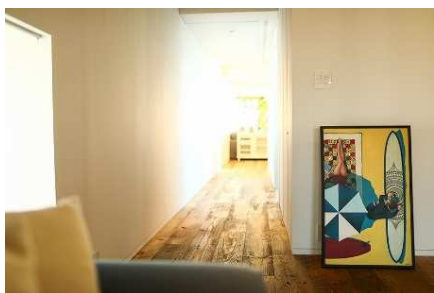
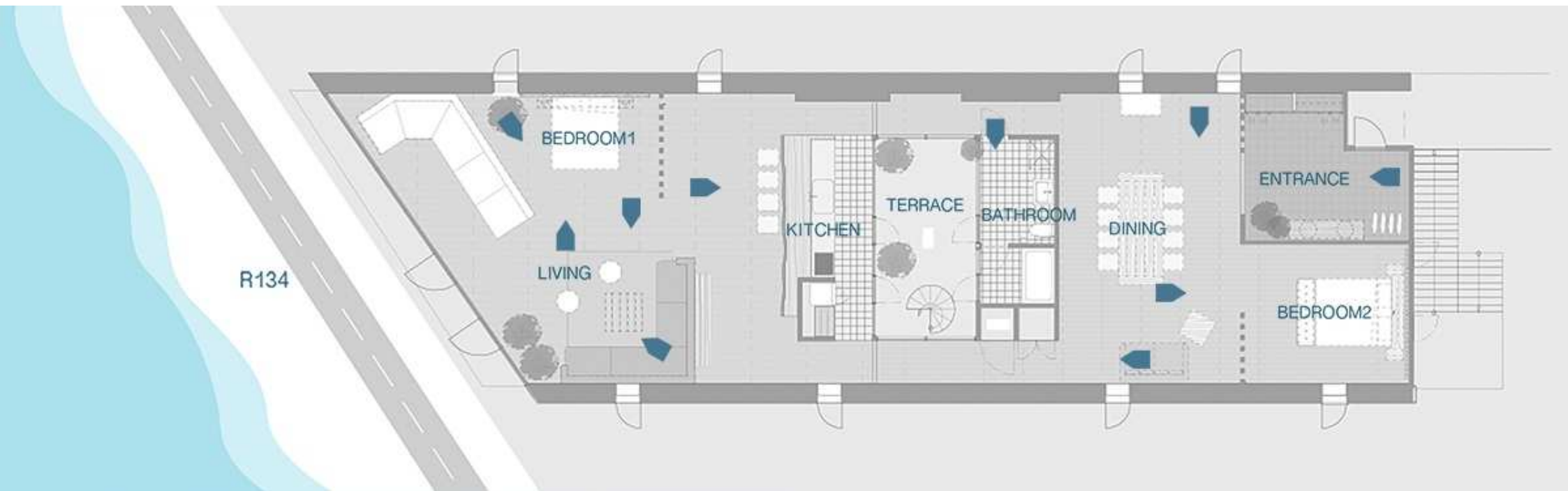
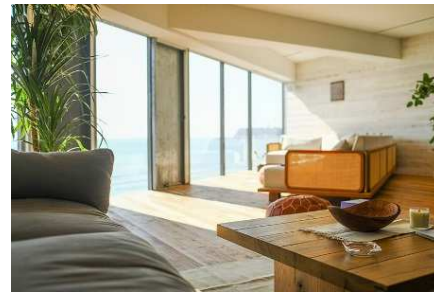
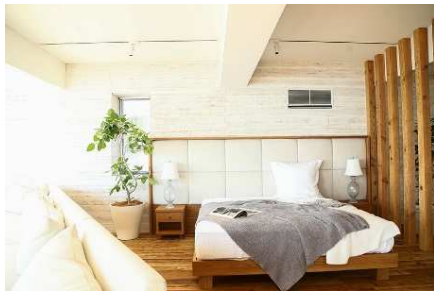
The bathroom has a basic tone of white while a gentle and soft light comes in through the courtyard.

living



Calm and serene living room

Let's watch the sunset as we sit comfortably on the large and cozy sofa.
The living room has a fantastic serene and peaceful atmosphere for you to relax in.



WEEKEND HOUSE ALLEY #305

◇2min. walk to Shichirigahama Station. on Enoshima Dentetsu Line◇

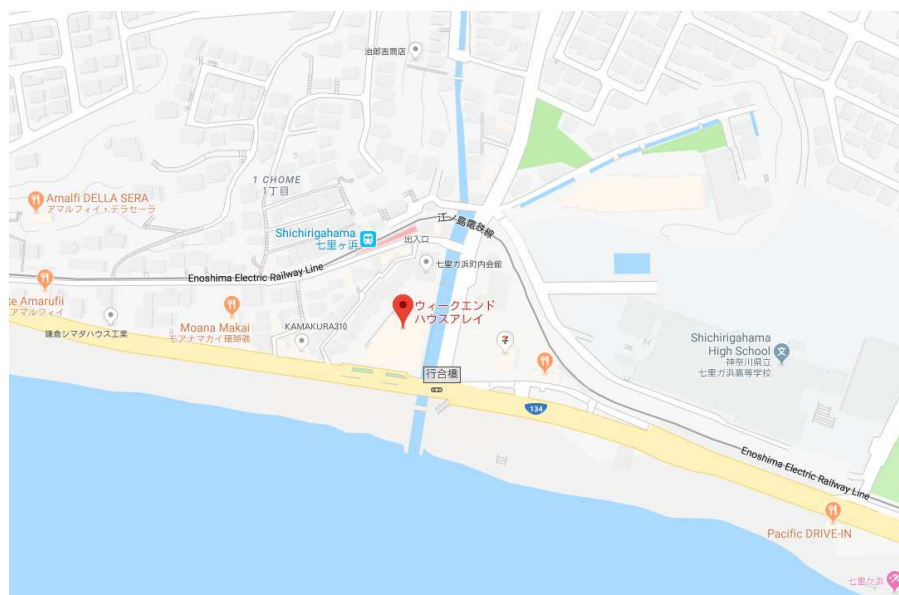
《BUILDING》

Address: 1 Chome-1-1, Shichirigahama, Kamakura-shi, Kanagawa-ken

Structure: RC structure 3 stories

Facilities: Air conditioner, IH Range, Warm water washing toilet seat,
Wood Flooring, Internet Connection, Auto-lock
Dedicated Rooftop, Bicycle Lot, Guest parking lot,
Furniture / household appliances included,
2 bed (King size), Refrigerator, Washer-Dryer, Oven range, Humidifier
Hairdryer, Vacuum cleaner, Projector (80 inch), Blu-ray DVD player
Speaker, Amplifier, Iron, Rice cooker, Electric pot, Cutlery, Dishes
Bedding, Towels, Bath amenity, sofa.

Completion: 2008/2



《TERMS》

Monthly Rent: ¥1,280,000-

Floor Area: 205.82m²

Floor Plan: 2LDK

Parking: ¥16,200-

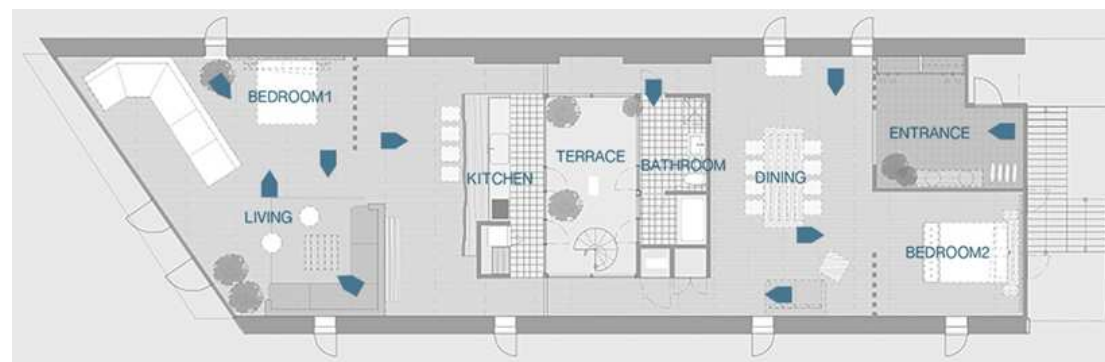
Key Money: 1Months

Deposit: 5Months

Period: 2 Years (Fixed term lease contract)

Available: Now

《REMARKS》 Consultation available for SOHO use, Room share,
Living with pets, Designer property, Top Floor,
Garbage disposal area available at all times.
1 minute walk to the coast



TIERRA
LIFESTYLE CONCIERGE

TIERRA Co.,Ltd.

Akasakanabankan 510, 7-6-41 Akasaka,
Minato-ku Tokyo 107-0052 Japan

TEL:03-5544-8334 FAX:03-5544-8318

東京都知事(1)第97903号

【一般媒介】